

# WHAT TO DO IF A STUDENT IS SICK FLOW CHART

## STUDENT PRESENTS WITH SYMPTOMS

Due to current conditions in Tuolumne County, with the guidance of Tuolumne County Public Health, anyone showing *one* symptom is considered high risk.

**High Risk (need 1):** fever/chills (100.4°F+), difficulty breathing, loss of taste or smell, new or worsening cough, sore throat, congestion/runny nose, headache, body aches, nausea/vomiting/diarrhea

## CONTACT PROGRAM ADMINISTRATOR OR ASSIGNED SCHOOL NURSE TO CONDUCT VERBAL, VISUAL, AND PHYSICAL ASSESSMENT

### VERBAL

When did the symptoms start?  
Any exposure to someone ill?  
What are your signs and symptoms?

### VISUAL

Flushed cheeks,  
difficulty breathing,  
fatigue, extreme  
fussiness/agitation,  
coughing

### PHYSICAL

>100.4°F  
<96% pulse oximetry

## VISUAL, VERBAL, AND/OR PHYSICAL CONCERNS IDENTIFIED

NO

OBSERVE FOR 10 MINUTES

IMPROVEMENT?

YES

NO

RETURN TO CLASS

CALL AND NOTIFY PARENTS

YES

ISOLATE AND PREPARE TO SEND HOME

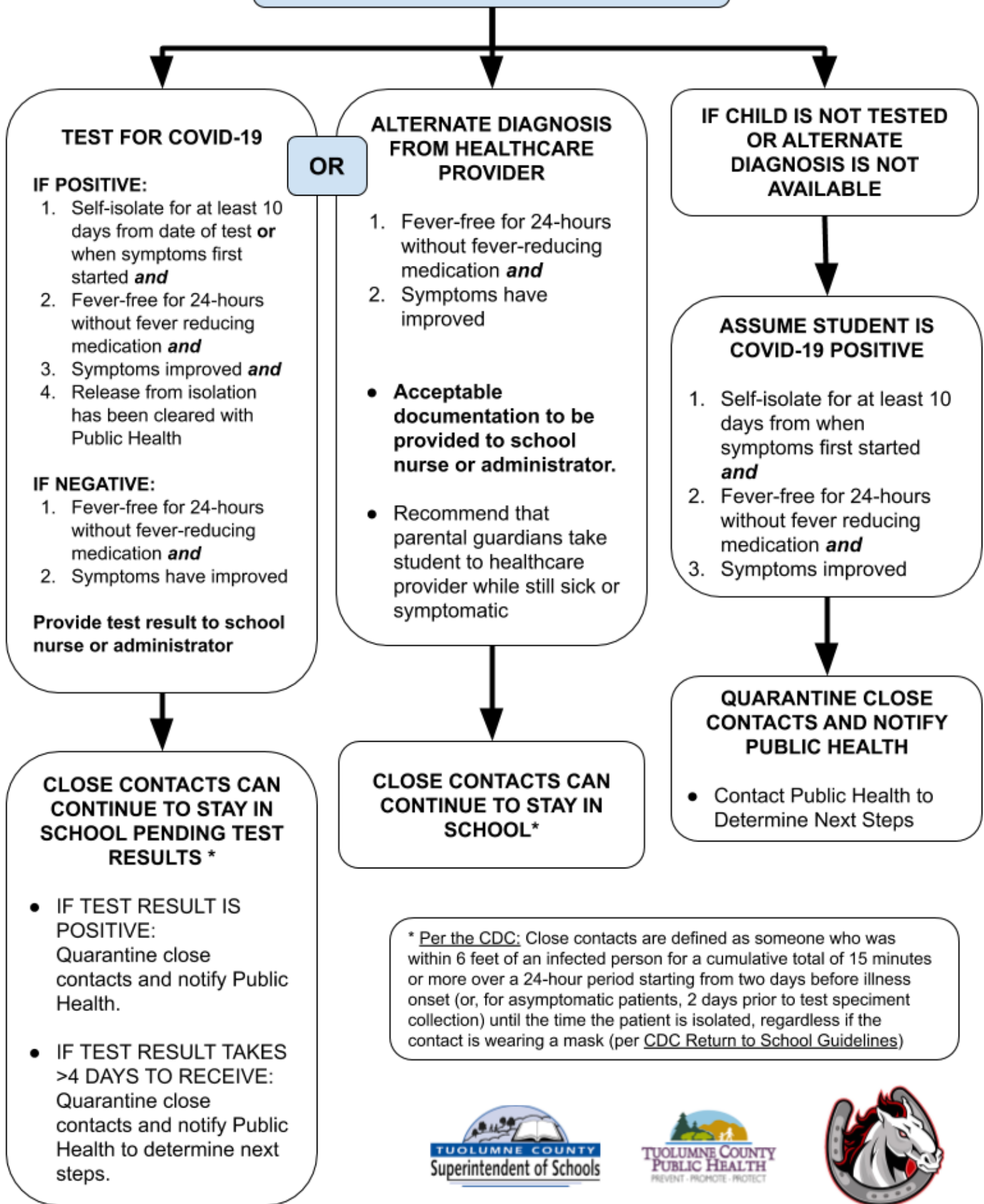
ARE SYMPTOMS SEVERE? IF SO, CALL 911

FOLLOW-UP WITH STUDENT/FAMILY, NOTIFY PUBLIC HEALTH FOR A SUSPECTED COVID-19 CASE

RETURN TO SCHOOL OPTIONS ON OTHER SIDE OF PAPER



# RETURN TO SCHOOL OPTIONS



\* Per the CDC: Close contacts are defined as someone who was within 6 feet of an infected person for a cumulative total of 15 minutes or more over a 24-hour period starting from two days before illness onset (or, for asymptomatic patients, 2 days prior to test specimen collection) until the time the patient is isolated, regardless if the contact is wearing a mask (per CDC Return to School Guidelines)

